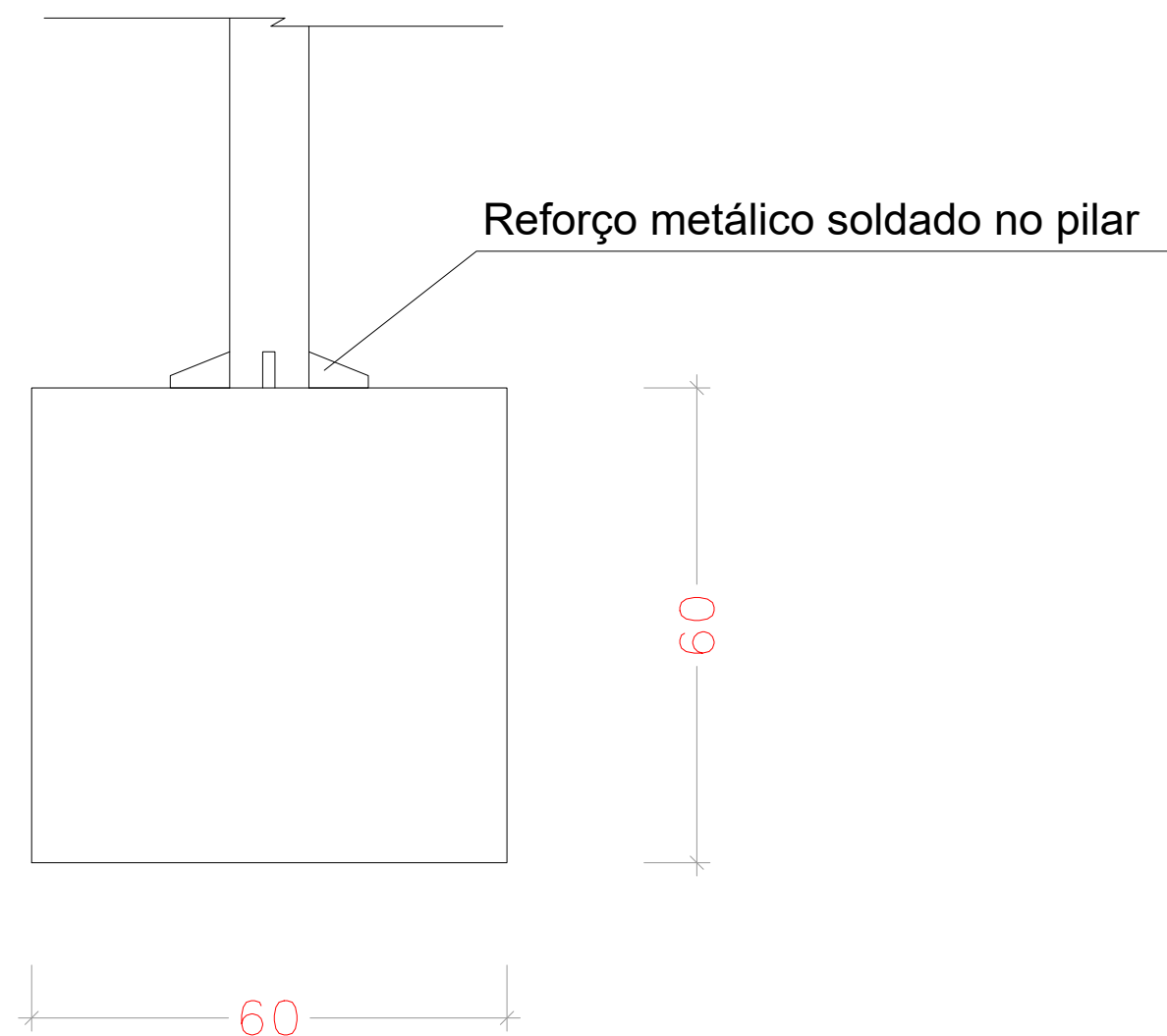
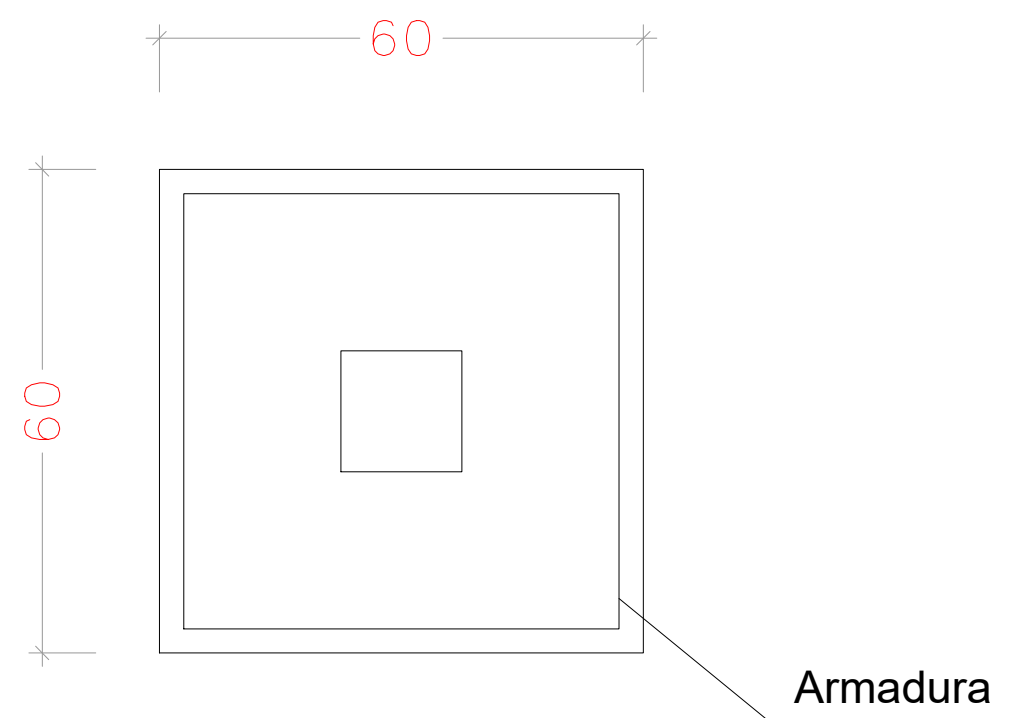


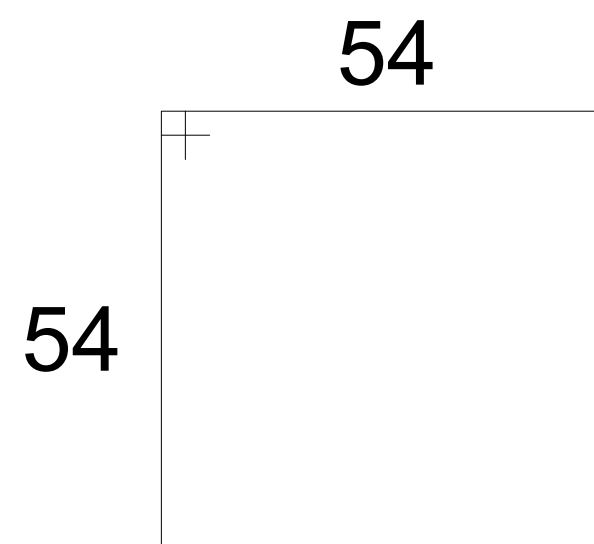
VISTA FRONTAL




CORTE



S1=S2=S3
PLANTA



3 N1 Ø 6,3 C/12 C=2,28

JÉSSICA MACHADO Engenheira Civil CREA SC 158328-1	
INTERVENÇÃO: COBERTURA UNIDADE DE SAÚDE GASPAR ALTO	
 PREFEITURA MUNICIPAL DE GASPAR SECRETARIA DE PLANEJAMENTO E DESENVOLVIMENTO PRAÇA GETULIO VARGAS n° 435 – CENTRO – GASPAR – CEP 89110–000	
OBRA: MARQUISE NA UNIDADE DE SAÚDE GASPAR ALTO	PROJETO: ESTRUTURAL
RUA ESTR. GERAL GASPAL ALTO – BAIRRO GASPAR ALTO – GASPAR – SC	ESCALA: S/ESCALA
CONTEÚDO: DETALHES DAS SAPATAS	PRANCHA: ES 01/01
DATA: NOV/2015	